

DAY OF CITIZENS FOR EUROPE IN ROME, ITALY

PROTECTING CITIZENS' RIGHTS: CHALLENGES AND OPPORTUNITIES FOR EU PASSENGERS

16th September 2014 Rome (Italy)



With the support of the Europe for Citizens
Programme of the European Union



OBSERVATORY PRICES AND TARIFFS

The Observatory prices and tariffs of Cittadinanzattiva was founded in 2005 with *the aim to compare the different pricing policies applied to public utilities and adopted in the various geographical areas of Italy.*

From the birth to now, the Observatory has been involved mainly in tariffs for:

- water services
- municipal waste
- municipal nursery schools
- *local public transport*
- *car insurance*

by promoting mode of action on the part of organizations to protect citizens in order to *prevent and not suffer the trend of prices and tariffs.*

THE STRUCTURE

The Observatory prices and tariffs is animated by a **central team** with the following functions:

- coordinate the data collection of prices and tariffs at a regional level;
- deal directly with the surveys to perform at a central level;
- updating the database;
- define features and tools for research;
- to prepare periodic reports;
- organize training sessions and disseminate the collected information.

The central team is supported by **local networks of volunteers**, belonging to Cittadinanzattiva and specifically trained. They are responsible for **periodic data collection on a local basis**; establish **relations with the representatives of local administrations and companies** whose services are covered by the survey; proceed to the **local dissemination of data** collected and **organize local training sessions** in order to expand the knowledge about prices and tariffs.

INVESTIGATIONS ON MOBILITY

The favorite typology of transport from house to work continues to be car, used in 74,3% of cases (year 2012) while the use of public transport remained at 13,7% (minus 0.4 % compared to 2009).

According to Istat, the annual expenses of a family, related to the use of car (e.g. insurance, fuel, ordinary and extraordinary maintenance) amounts to € 3,000 while those related to the use of public transport is € 335.

As for mobility, our main investigations deal with:

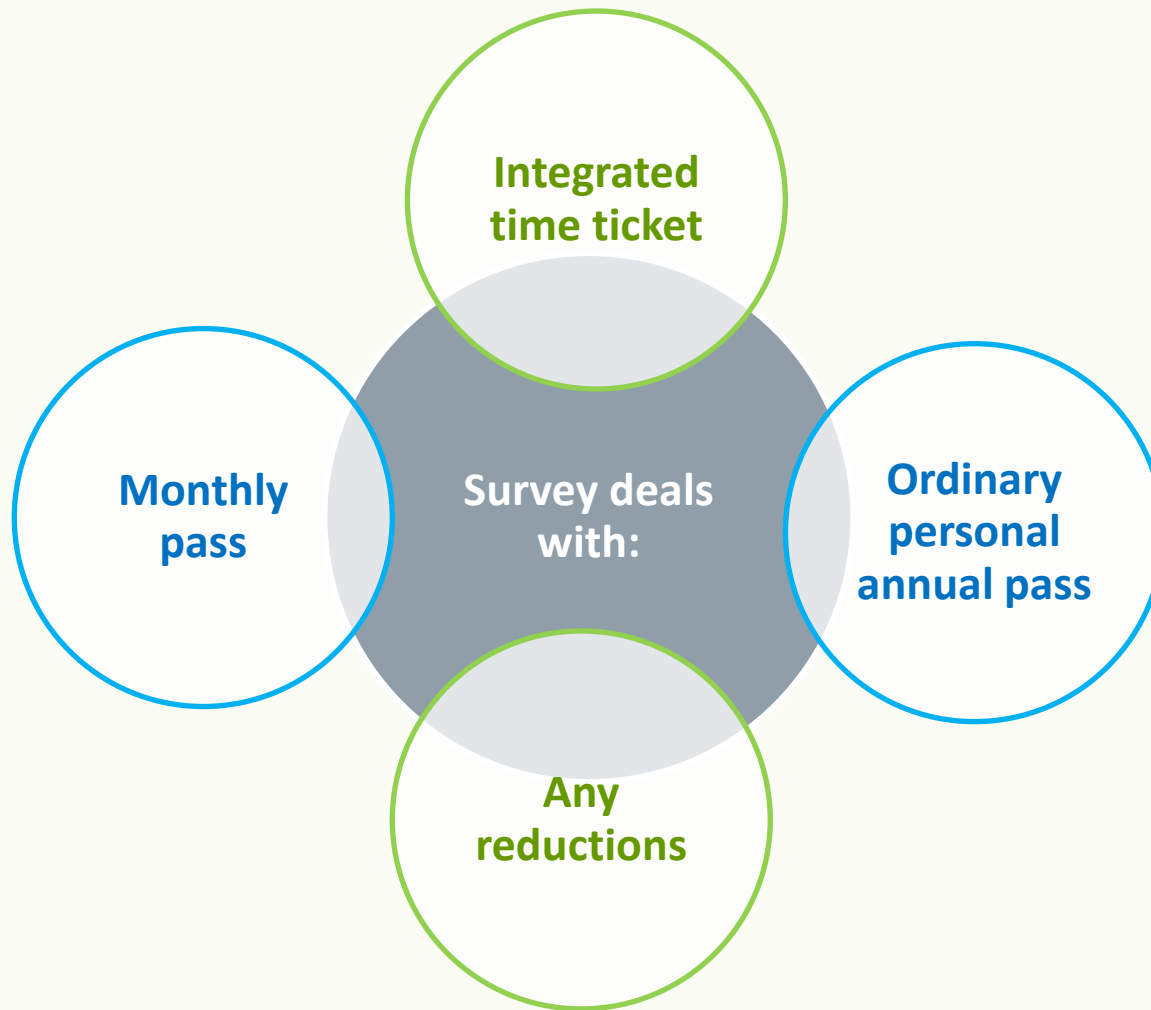
- Tariffs of local public transport (road and rail)
- Car insurance
- Motorway fees

Our surveys cover all the national area:

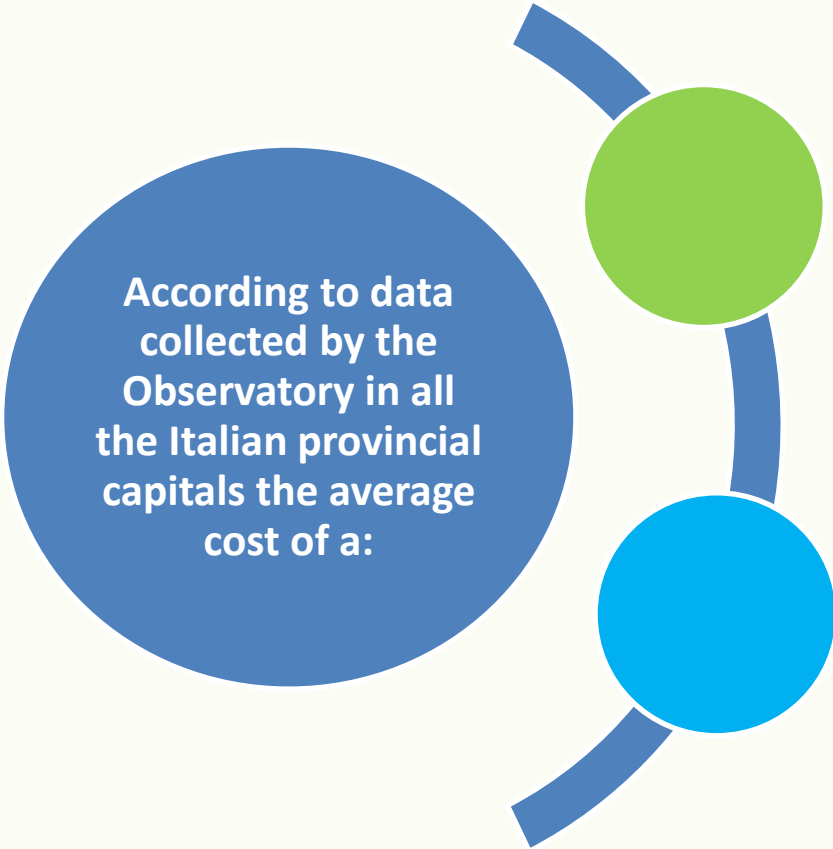
- 20 regions
- 106 cities (provincial capitals)

Surveys are annual

LOCAL PUBLIC TRANSPORT



LOCAL PUBLIC TRANSPORT/SOME DATA



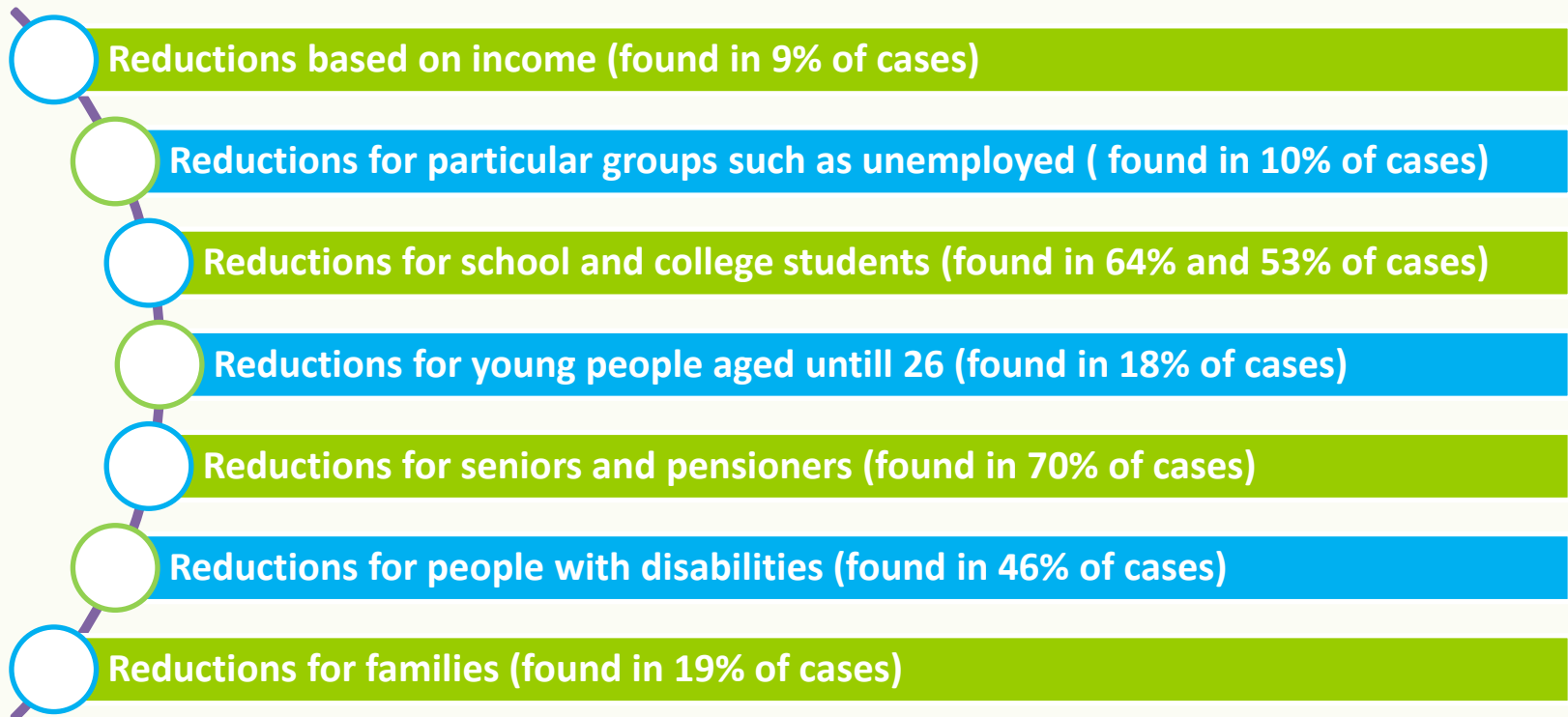
According to data collected by the Observatory in all the Italian provincial capitals the average cost of a:

Monthly pass is € 31,5
(with a minimum of € 13 and a maximum of € 55)

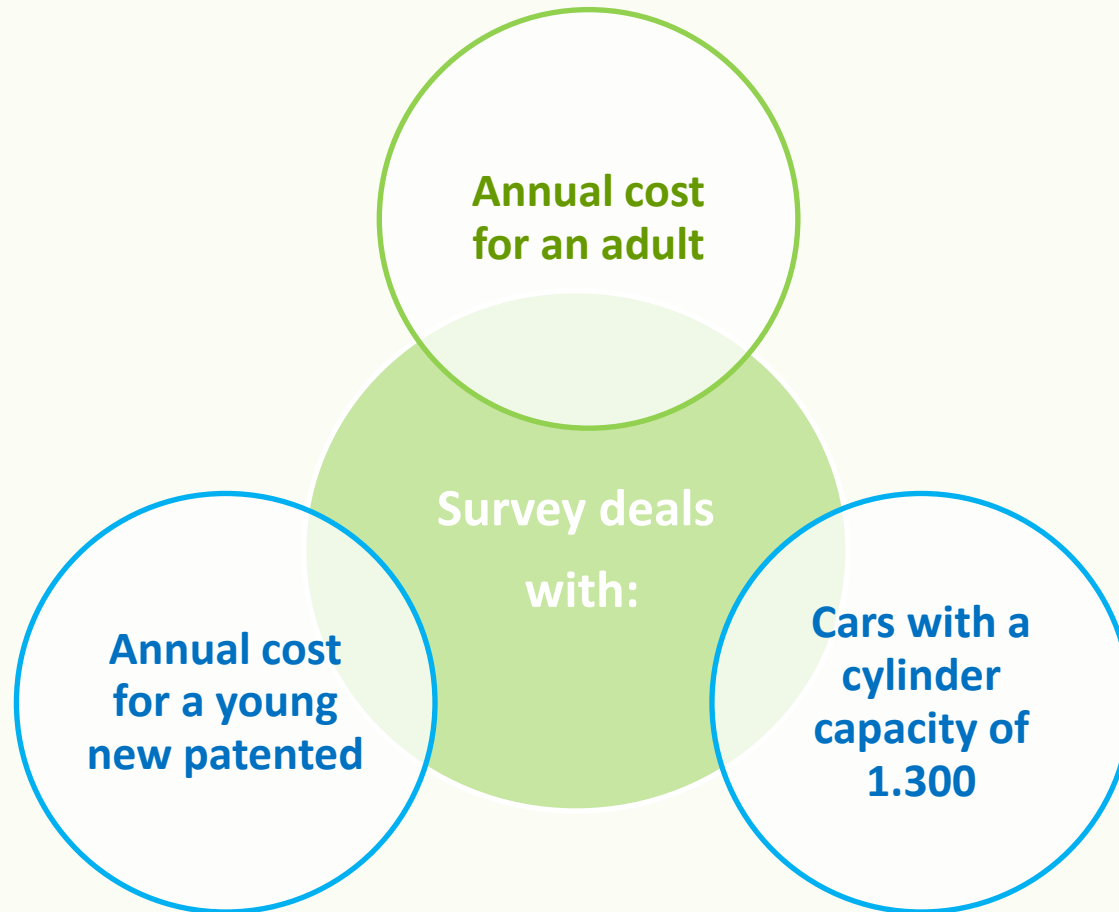
Annual pass is € 290
(with a minimum of € 150 and a maximum of € 500)

LOCAL PUBLIC TRANSPORT/SOME REDUCTIONS

In the last year, our survey has focused also on the presence of any reductions in tariffs for certain categories of persons.

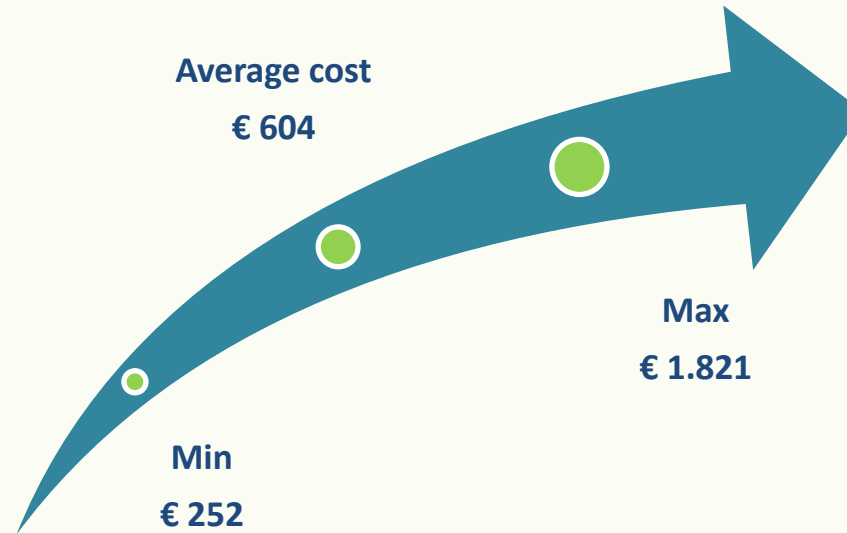


CAR INSURANCE

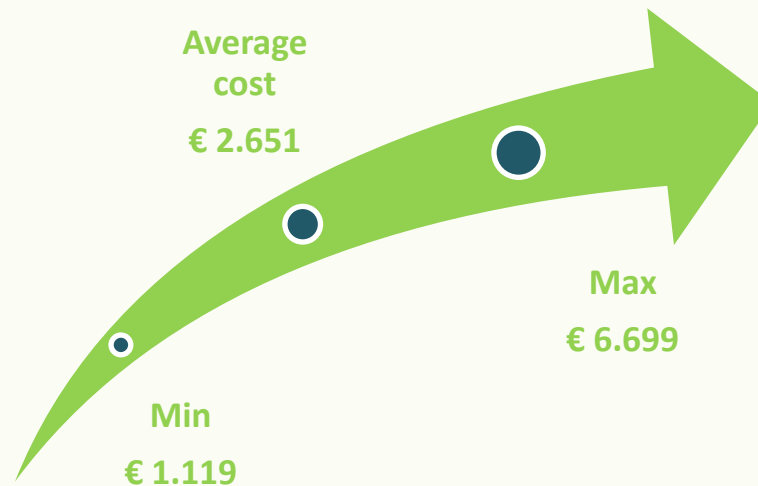


CAR INSURANCE/SOME DATA

Adult



Young



Thanks for
your
attention !

Tiziana Toto
t.toto@cittadinanzattiva.it

