

Fear of COVID-19

Promoting civic information to better address the collateral damage of COVID-19 on cardiovascular disease across Europe
Active Citizenship Network Webinar

Prof. Christiaan Vrints

ESC Advocacy Committee, European Society of Cardiology

29 September 2021

Bergamo, March 2021



Army trucks needed to transport coffins to cemeteries



Overwhelming of morgues



L'Eco di Bergamo with 10 pages of obituaries

Pandemic within the pandemic: FEAR of COVID-19 in hospitals



Impact of COVID-19 Pandemic on CVD Care

Fear by the patient, containment mandate and resource allocations during COVID-19 pandemic have prevented optimal CV care

Fewer patients were seen with acute CVD conditions during COVID-19

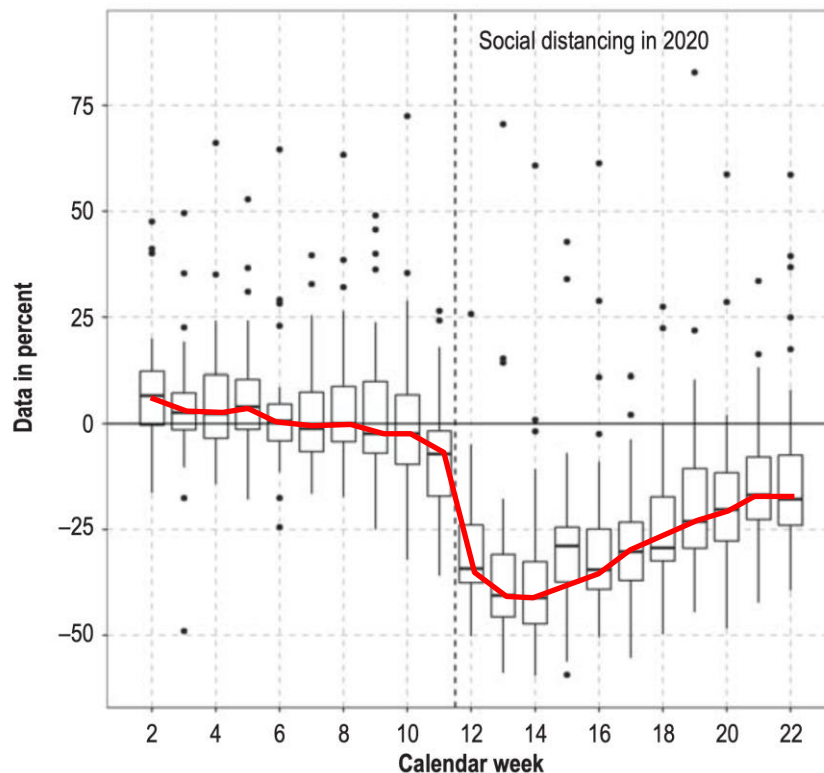
The outcomes of patients with a heart attack were worse

Patient's fear and the shift in resource allocations may lead to a higher CV mortality in the future



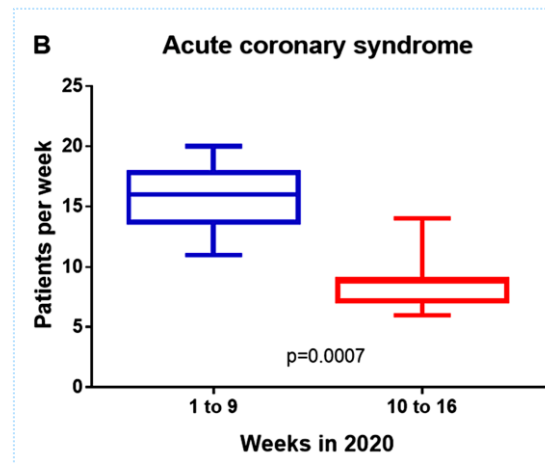
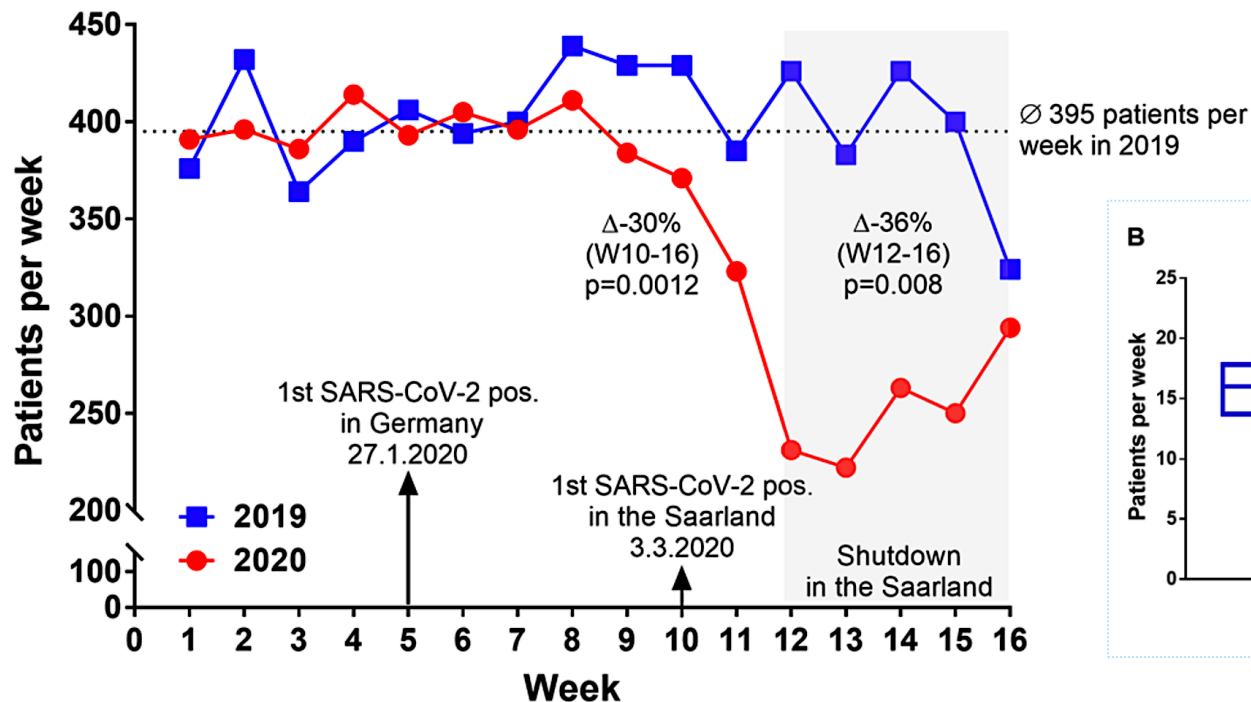
Medical Emergencies During COVID-19

(1.022.007 emergency room consultations in 36 hospitals in Germany)



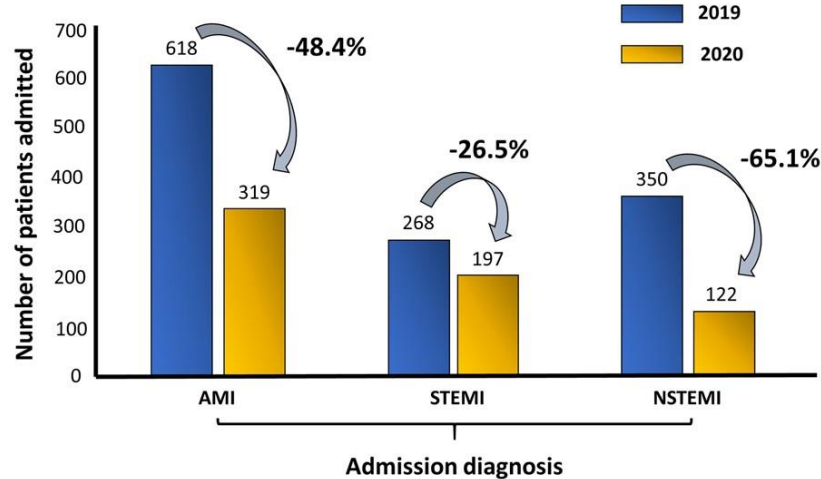
Emergency Visits for Acute Coronary Syndrome during COVID-19 in Germany

Emergency department visit volume

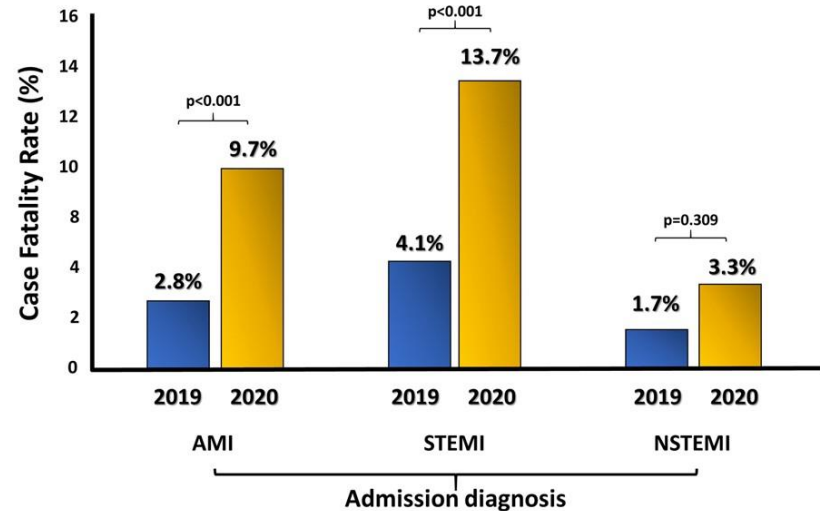


Acute Coronary Syndromes during COVID-19 in Italy ESC decreased admissions and increased mortality

Admissions for Myocardial Infarction During Covid-19 Pandemic in Italy
Number of Patients admitted in one week



Mortality

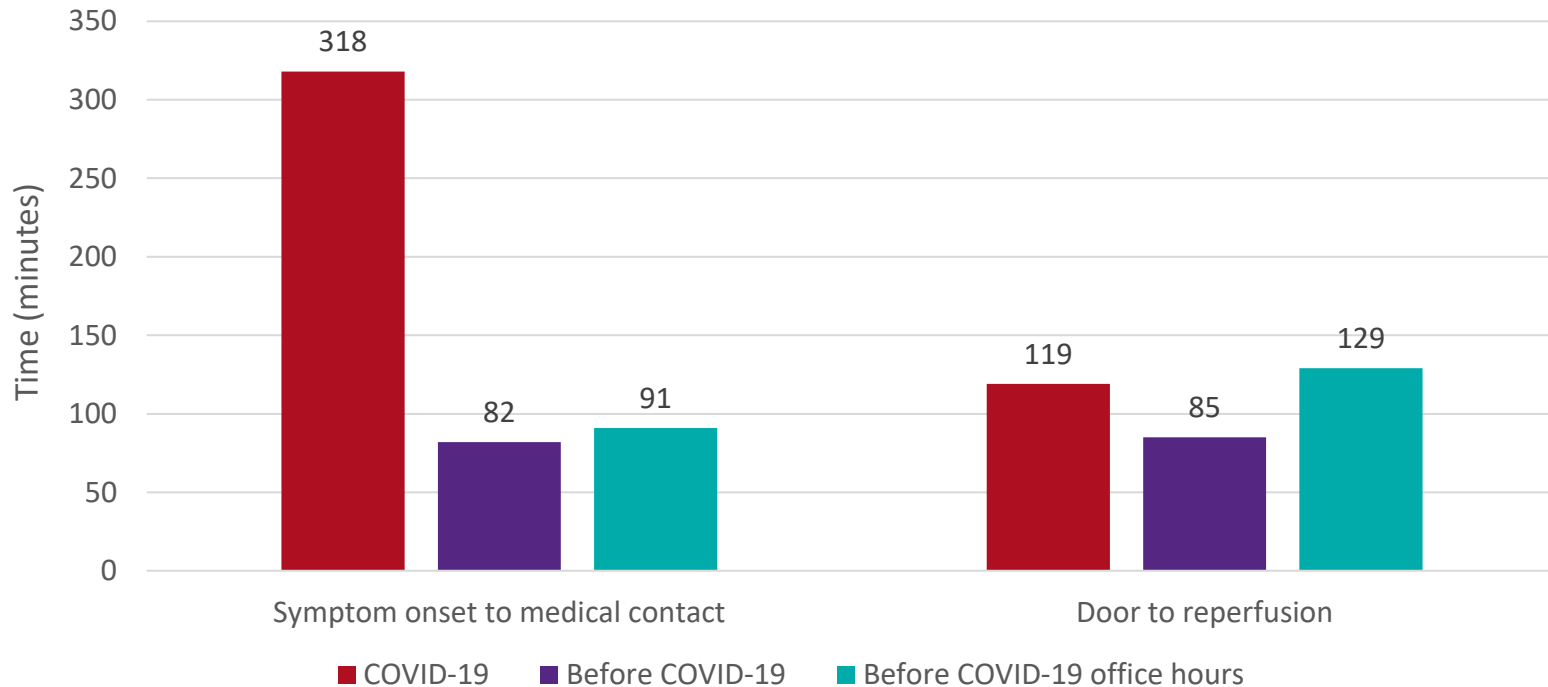


- time from symptom onset to coronary angiography +39.2%
- time from first medical contact to coronary revascularization +31.5%

COVID Pandemic in Hong Kong

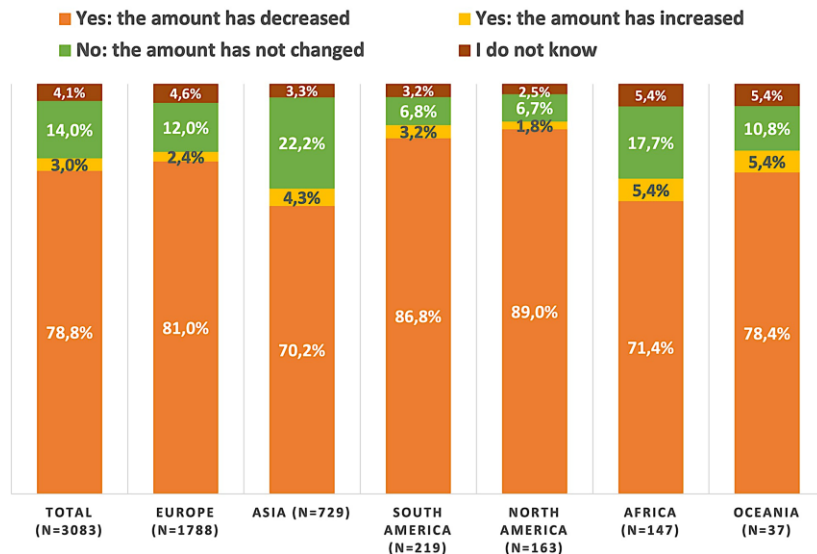
Delays in Care of Patients with a Heart Attack

During COVID Pandemic **40%** of patients with a heart attack presented too late for optimal care

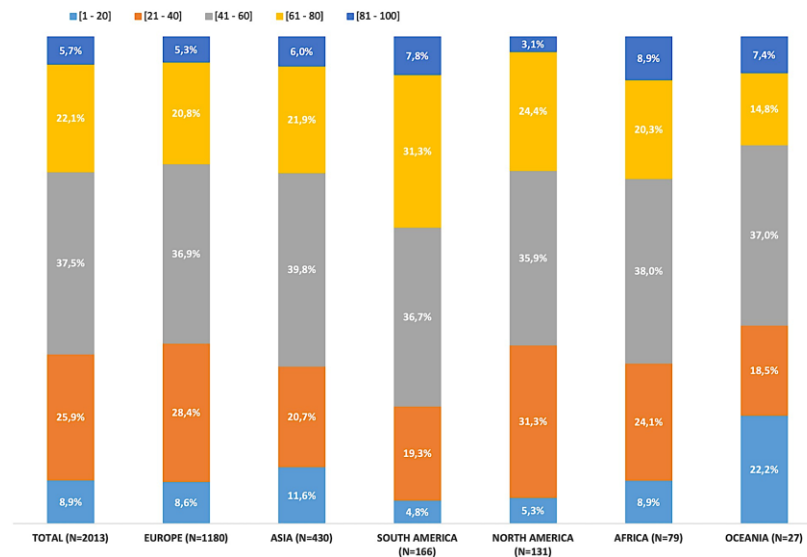


ESC Survey : admission of patients with STEMI since the outbreak of the COVID-19 pandemic

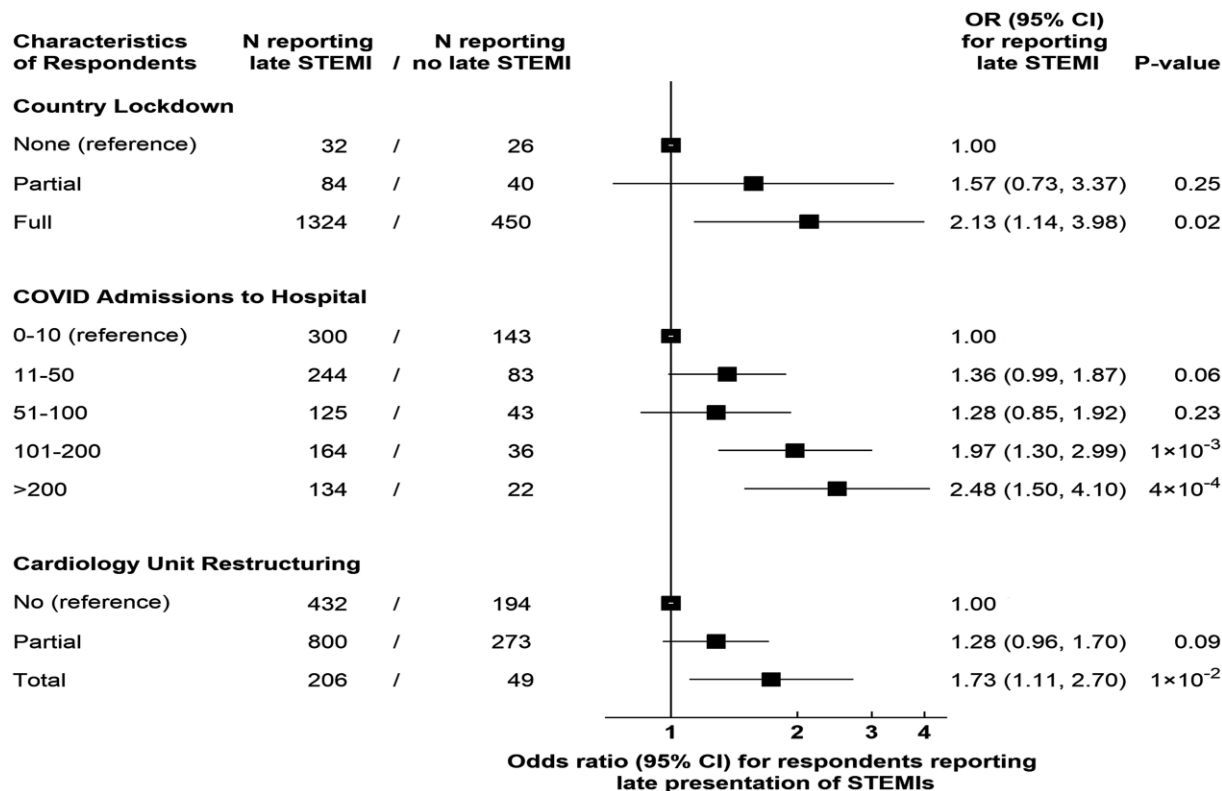
Have you perceived a change in the number of people coming to your hospital with STEMI since the coronavirus outbreak?



By which percentage has the number of STEMI patients decreased?

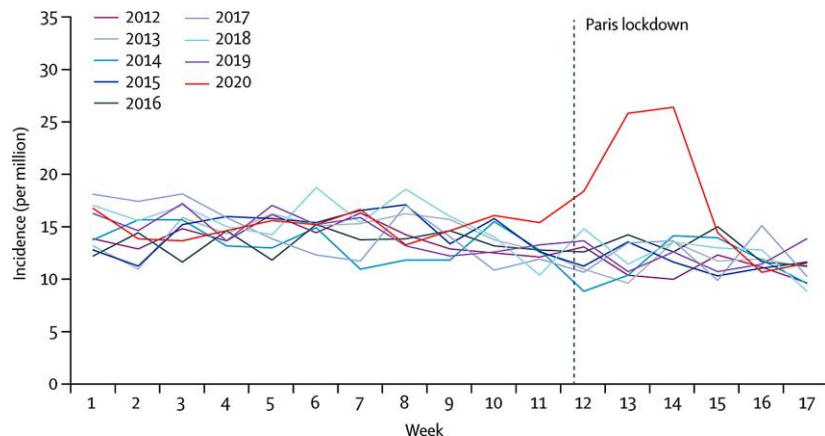


ESC Survey : admission of patients with STEMI since the outbreak of the COVID-19 pandemic

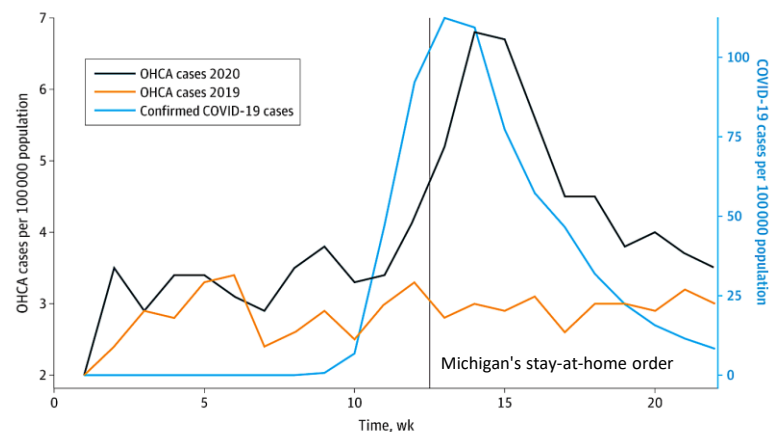


Out-of-hospital cardiac arrest during the COVID-19 pandemic in Paris and Detroit Metropolitan Area

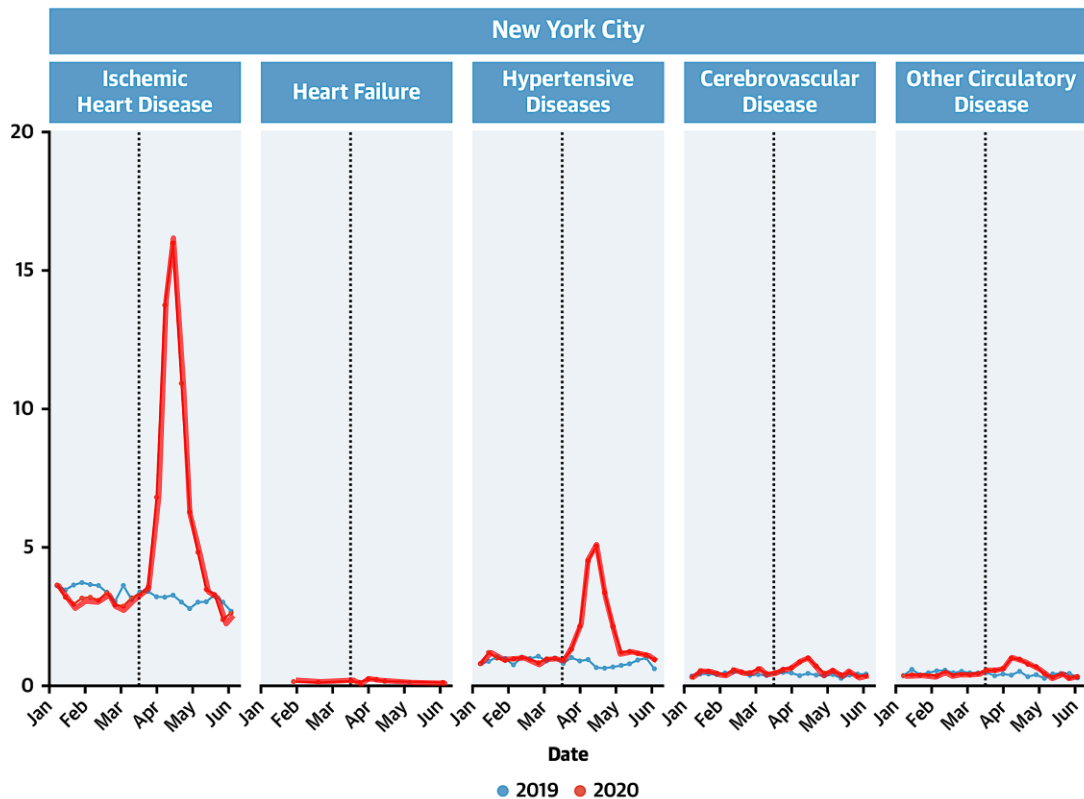
Paris



Detroit



Impact of COVID-19 pandemic on CV mortality





The chart displays the weekly number of deaths in 2020, categorized into 'Other deaths' (blue bars) and 'COVID-19 deaths' (white bars). The y-axis represents the number of deaths, ranging from 0 to 90,000. The x-axis shows the weeks of the year, from January 1 to December 26. The total number of deaths peaks in early April at approximately 80,000, primarily due to a surge in COVID-19 deaths. Other deaths remain relatively stable, fluctuating between 50,000 and 60,000 per week. COVID-19 deaths show a clear seasonal pattern, with a significant peak in the spring and a decline through the summer and autumn, followed by a slight increase in late 2020.

Week	Other deaths	COVID-19 deaths	Total deaths
1	60,000	0	60,000
2	60,000	0	60,000
3	59,000	0	59,000
4	59,000	0	59,000
5	58,000	0	58,000
6	58,000	0	58,000
7	58,000	0	58,000
8	58,000	0	58,000
9	58,000	0	58,000
10	58,000	0	58,000
11	58,000	0	58,000
12	58,000	0	58,000
13	58,000	0	58,000
14	58,000	0	58,000
15	58,000	0	58,000
16	58,000	0	58,000
17	58,000	0	58,000
18	58,000	0	58,000
19	58,000	0	58,000
20	58,000	0	58,000
21	58,000	0	58,000
22	58,000	0	58,000
23	58,000	0	58,000
24	58,000	0	58,000
25	58,000	0	58,000
26	58,000	0	58,000
27	58,000	0	58,000
28	58,000	0	58,000
29	58,000	0	58,000
30	58,000	0	58,000
31	58,000	0	58,000
32	58,000	0	58,000
33	58,000	0	58,000
34	58,000	0	58,000
35	58,000	0	58,000
36	58,000	0	58,000
37	58,000	0	58,000
38	58,000	0	58,000
39	58,000	0	58,000
40	58,000	0	58,000
41	58,000	0	58,000
42	58,000	0	58,000
43	58,000	0	58,000
44	58,000	0	58,000
45	58,000	0	58,000
46	58,000	0	58,000
47	58,000	0	58,000
48	58,000	0	58,000
49	58,000	0	58,000
50	58,000	0	58,000
51	58,000	0	58,000
52	58,000	0	58,000
53	58,000	0	58,000
54	58,000	0	58,000
55	58,000	0	58,000
56	58,000	0	58,000
57	58,000	0	58,000
58	58,000	0	58,000
59	58,000	0	58,000
60	58,000	0	58,000
61	58,000	0	58,000
62	58,000	0	58,000
63	58,000	0	58,000
64	58,000	0	58,000
65	58,000	0	58,000
66	58,000	0	58,000
67	58,000	0	58,000
68	58,000	0	58,000
69	58,000	0	58,000
70	58,000	0	58,000
71	58,000	0	58,000
72	58,000	0	58,000
73	58,000	0	58,000
74	58,000	0	58,000
75	58,000	0	58,000
76	58,000	0	58,000
77	58,000	0	58,000
78	58,000	0	58,000
79	58,000	0	58,000
80	58,000	0	58,000
81	58,000	0	58,000
82	58,000	0	58,000
83	58,000	0	58,000
84	58,000	0	58,000
85	58,000	0	58,000
86	58,000	0	58,000
87	58,000	0	58,000
88	58,000	0	58,000
89	58,000	0	58,000
90	58,000	0	58,000
91	58,000	0	58,000
92	58,000	0	58,000
93	58,000	0	58,000
94	58,000	0	58,000
95	58,000	0	



Heart disease likely to remain #1 killer indefinitely due to long-term COVID-19 impact

Unhealthy lifestyle behaviors

- poor eating habits and lower quality diets,
- increased alcohol consumption,
- changes in work/sleep habits
- lack of regular exercise (excessive sedentary screen time)
- mental stress of social isolation



Missed medical visits

Fear of hospitals

Heart-related risk for COVID-19 patients

- Coronary risk factors (blood pressure, obesity and diabetes)
--> increased risk for COVID-19 related cardiovascular complications (acute & long-term!)
- **FEAR of / DISTRUST in** COVID-19 vaccin!

COVID-19 Pandemic But The Heart Can't Pause



A HEART ATTACK

A BURNING OR TIGHTENING PRESSURE IN CHEST

<https://www.youtube.com/watch?v=jkmQ8hBQO1E>